



# 2-WAY TOGGLE VALVES



## 2-WAY TOGGLE VALVES

2-way valves are the simplest pneumatic component—their function is

merely to turn an air supply on and off. They may best be compared to a water faucet; in the “on” position water

flows from inlet to outlet, and in the “off” position the water flow is stopped. 2-way toggle valves may have a poppet or spool, and may be either a 2 position or have a momentary actuation.

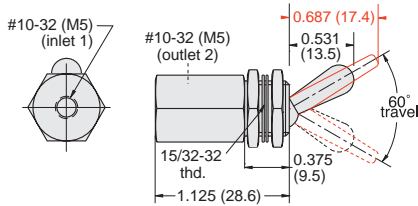
**Medium:** Air, Water or Oil

**Materials:** Brass body, Buna-N seals, stainless steel stem and spring

**Force For Full Stem Travel:** 12 oz. nominal

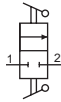
**Mounting:** 15/32-32 thread. Nuts and lockwashers furnished.

### 2 Position Spool Valves



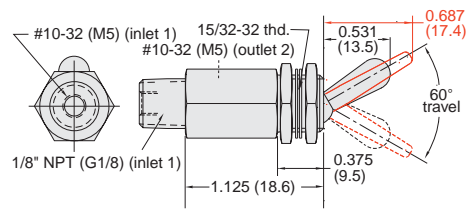
**Input Pressure:** 150 psig/10 bar max.

**Air Flow:** 4.5 SCFM @ 50 psig; 8.0 SCFM @ 100 psig; 190 l/min @ 6 bar



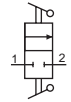
Part No.	Description
TV-2S	. . . . .2 Position Spool Valve, NP Brass Toggle, #10-32
TV-2S-M5	. . . . .2 Position Spool Valve, NP Brass Toggle, M5
TV-2SF	. . . . .2 Position Spool Valve, Plastic Toggle, #10-32
TV-2SF-M5	. . . . .2 Position Spool Valve, Plastic Toggle, M5

### 2 Position Spool Valves with 1/8" NPT Inlet



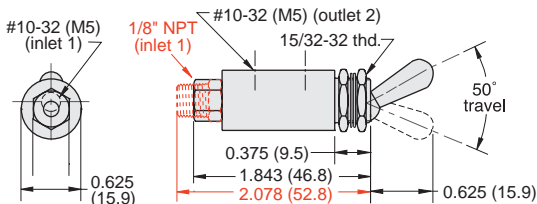
**Input Pressure:** 150 psig max.

**Air Flow:** 4.5 SCFM @ 50 psig; 8.0 SCFM @ 100 psig;



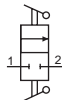
Part No.	Description
TV-2SP	. . . . .2 Position Spool Valve, NP Brass Toggle, 1/8" NPT
TV-2SFP	. . . . .2 Position Spool Valve, Plastic Toggle, 1/8" NPT

### 2 Position Poppet Valves



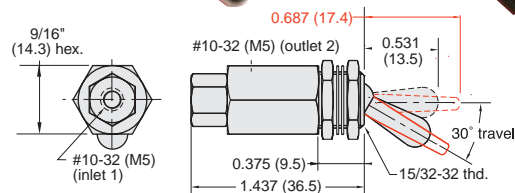
**Input Pressure:** 150 psig/10 bar max.

**Air Flow:** 4.0 SCFM @ 50 psig; 7.3 SCFM @ 100 psig; 175 l/min @ 6 bar



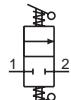
Part No.	Description
MTV-2	. . . . .2 Position Poppet Valve, #10-32
MTV-2-M5	. . . . .2 Position Poppet Valve, M5
MTV-2P	. . . . .2 Position Poppet Valve, 1/8" NPT

### 2 Position N.C. Poppet with Momentary Actuation



**Input Pressure:** 150 psig/10 bar max.

**Air Flow:** 4.5 SCFM @ 50 psig; 8.0 SCFM @ 100 psig; 175 l/min @ 6 bar



Part No.	Description
TV-2M	. . . . .2 Position N.C. Poppet Valve, NP Brass Toggle, #10-32
TV-2M-M5	. . . . .2 Position N.C. Poppet Valve, NP Brass Toggle, M5
TV-2MF	. . . . .2 Position N.C. Poppet Valve, Plastic Toggle, #10-32
TV-2MF-M5	. . . . .2 Position N.C. Poppet Valve, Plastic Toggle, M5